

## Bidcon

### Produce detailed cost plans quickly and accurately

Take control of your costs and save time and money

- ◆ Manage diverse information
- ◆ Drive standardisation
- ◆ Increase efficiency
- ◆ Future-proof your business

The screenshot displays the Bidcon software interface. On the left, a detailed cost plan table is visible, listing various building components and their associated costs. The table includes columns for 'Ob', 'Active', 'Group', 'NRM', 'Free Code', 'Name', 'Locked Qu', 'Consum', 'Quantity', 'Unit', and 'Tri'. The components listed include items like 'Skirting pine 12x56 factory treated', 'Cornice 21x70 pine', 'Tiles on walls in dry areas', 'Plasterboard Normal (12 mm or 13...)', 'Plasterboard Normal t+13mm...', 'Plasterboard Normal t+12mm...', 'Drywall screws S 25x3.5mm...', 'Carpenter (standard)', 'Plywood t+12 on wall', 'Plastic sheeting 0.2mm on the wall', 'Partition Frame s450 45x(95 or...', 'Timber 45x95 mm unprocessed', 'Timber 45x110 mm...', 'Sound Seal GPD 95/4 polyeten...', 'Extra material', 'Carpenter (standard)', 'Insulation Mineral Wool Timber...', 'Plywood t+12 on wall', 'Plasterboard Normal t+13mm...', 'Plasterboard Normal t+12mm...', 'Addition tiling diagonal...', 'Tiles on walls in dry areas...', 'Cornice 21x70 pine', and 'Skirting pine 12x56 factory treated'.

On the right, a 3D architectural rendering shows a modern interior space with a yellow wall, a black sofa, and a wooden coffee table. The rendering is viewed from a perspective angle, showing the ceiling and floor details.

Bidcon goes into a high level of detail. All rates are built ‘from the bottom up’ so behind every building component is a bespoke recipe that includes labour and material rates for every single item. This ensures that no cost is overlooked and puts you in control of your costs from the start with the most accurate estimation possible.

### Some key functionality includes:

#### Powerful cost libraries

Spon’s price books are included as standard. Alternatively, import your own, link to suppliers’ websites, or set up a ‘live-feed’ via ERP.

#### Multiple inputs – multiple outputs

Populate your net sheet manually or use Excel and XML files, Bluebeam 2D takeoffs or 3D IFC model takeoffs. Create a wide variety of customised reports to ensure you get the information that is important for your business.

#### Work with templates

Use standard templates such as NRM and SMM7, or easily create your own.

#### Customise to suit your needs

Choose from options such as resources, work results, design elements or mixed elements. Use the standard examples or customise to create bespoke ‘recipes’ to apply to your quants.

#### Manage sub-contractors easily

Automated email quote system, Excel-based responses and automatic upload to allow direct comparison.

#### High levels of security

Easily manage user rights depending on role and secure the estimation as you progress through key stages to create an audit trail.

# Bidcon

## Save time and money working in 5D

By linking cost details with objects in 3D models and then linking the time element to a project plan in Asta Powerproject, you can work with powerful 5D BIM data and take greater control of your projects.

- ◆ Perform instantaneous takeoffs from 3D models
- ◆ Seamlessly import and compare revisions
- ◆ Export resulting estimation into Asta Powerproject
- ◆ Pre-populate project plans with costs and resources
- ◆ Improve collaboration and data sharing across project teams

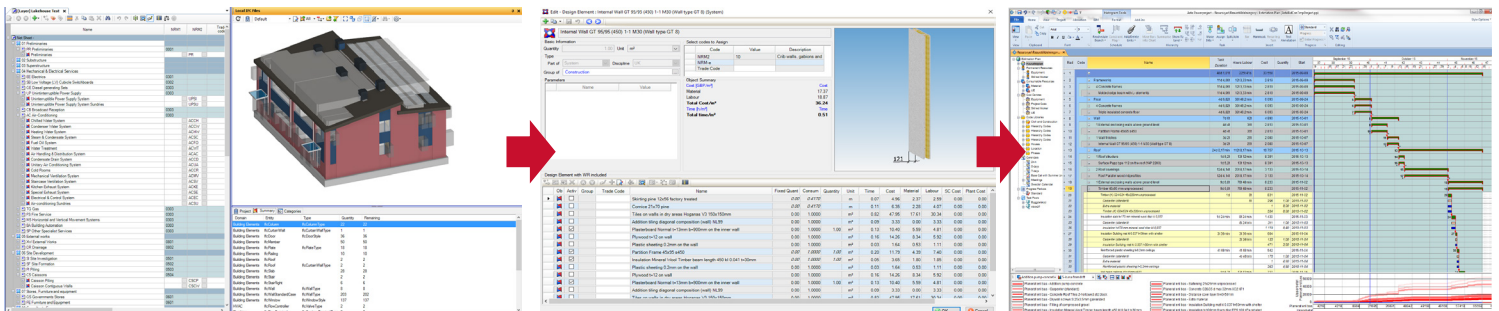


## Navigate

Import an IFC file into Bidcon and simply move the camera around or through the model. Key information for each individual object, such as dimensions or specifications, can easily be accessed and can be validated using the audit function. Bidcon also presents useful ways to identify areas in the model that need correcting and allows the user to work around these whilst an updated model is created.

## Extract

The correct descriptions and dimensions can be set as part of the takeoff from a single model or a group of models. Use the comparison function to see the changes that have been made between selected versions of a model. Extracted quantities can be managed as normal or setup to be automatically replaced by items in the database, enabling instant generation of a cost plan and a quick 'bid/no bid' decision.



## Link with the model

It is important to see where the information came from when viewing quantities that were extracted from a model or linked to an existing cost plan. Bidcon ensures that the objects in the model remain linked to the line items as well as their multi-dimensional rate build-ups. This means that, when the model is revised, the data in the cost plan is updated with the changes to the dimensions used and the detail behind the costs and resources can be saved to the model. It also makes the process of carrying out 'what if' scenarios simple.

## True 5D BIM

The rate build-ups associated with the objects in the model are available to a 4D planning application such as Asta Powerproject BIM. This means that the IFC model can be used to create a fully-resourced programme which remains linked to the model even when changes are made to the schedule and when the cost plan is updated. This information can also be used for progressing and cash flow reporting.

### More information

For information on licensing terms and a quote to suit your needs, please call us on +44 (0)1844 261700 or email [info@elecosoft.com](mailto:info@elecosoft.com).

©2017 Elecosoft UK Ltd.

[elecosoft.com](http://elecosoft.com)

# Elecosoft®

**Bidcon: The modern approach to cost estimation**